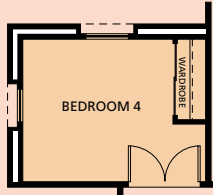


Monterey Residence Two

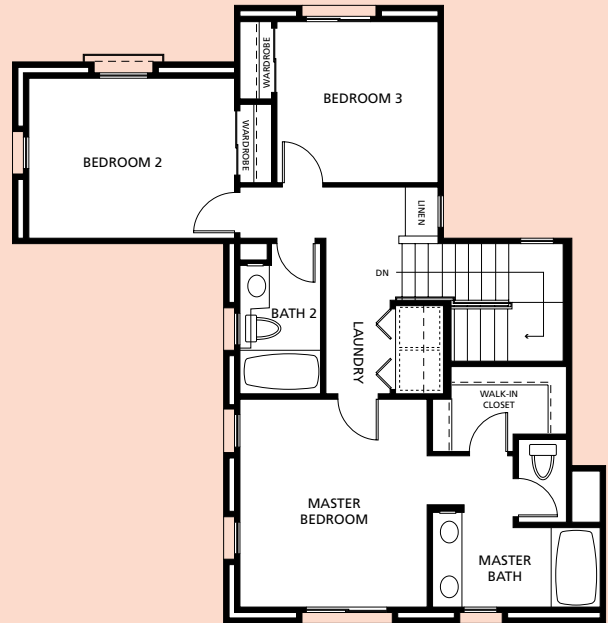
Approximately 1,630 Square Feet



OPTIONAL BEDROOM 4
IN LIEU OF DEN



FIRST FLOOR



SECOND FLOOR



Monterey Residence Two - Features

- Front entry through large covered porch
- Spacious living/dining area with space and hook-ups for media center and french doors opening to covered front loggia
- Large breakfast bar between kitchen and dining area
- Full height pantry in kitchen
- Den (or optional 4th bedroom) on lower level
- Large walk-in closet in master bedroom
- Two lavatories and separate water closet in master bathroom
- Laundry area on upper level
- Extra deep storage closet on lower level
- Attached 2-car garage

Two Story, Three bedrooms, Two and a half baths, Den or Fourth bedroom Option, Formal Living Room, Elegant Dining Area, Spacious Kitchen with Breakfast Bar, upper level Laundry Center, Master Bedroom Suite with Large Walk-in Closet, and Attached Two-Car Garage

The Monterey Town Homes are attached single-family residences, designed and built in clusters of two to six units per building.

There will be three floor plans available, ranging in size from approximately 1,460 square feet to almost 1,800 square feet. The Monterey Plan 3 will be adaptable for handicap access.

In the interest of continuous improvements, the Site Authority reserves the right for all units not under contract, to modify or change pricing, floor plans, materials, features, colors or availability of options without prior notice or obligation, from phase to phase. Product type is subject to availability. Optional features may be included at additional costs subject to construction cutoff dates. All square footages are approximate and may differ from actual measurement. All renderings, floor plans, color schemes and maps are artist conceptions and are not intended to be an actual depiction of the buildings, fencing, walks, driveways or landscaping. The Site Authority reserves the right to change or even not build future phases. Buyers should read carefully the Buyer Disclosure statement for all details of the Housing Program. The University Glen Corporation is supported by all residents in order to manage the aesthetic integrity of University Glen, maintain certain common areas and administer standards for the use and enjoyment of the University Glen residents. Payment of maintenance and management fees is required of all residents.

